



**La Medusa: gli stati dell'Acqua
nella cosmetica**
Formulation booklet



La Medusa

ARCHETIPO DELLA SOCIETÀ

Potente simbolo archetipico che riflette alcune delle sfide e dei sentimenti associati al mood attuale del Mondo:

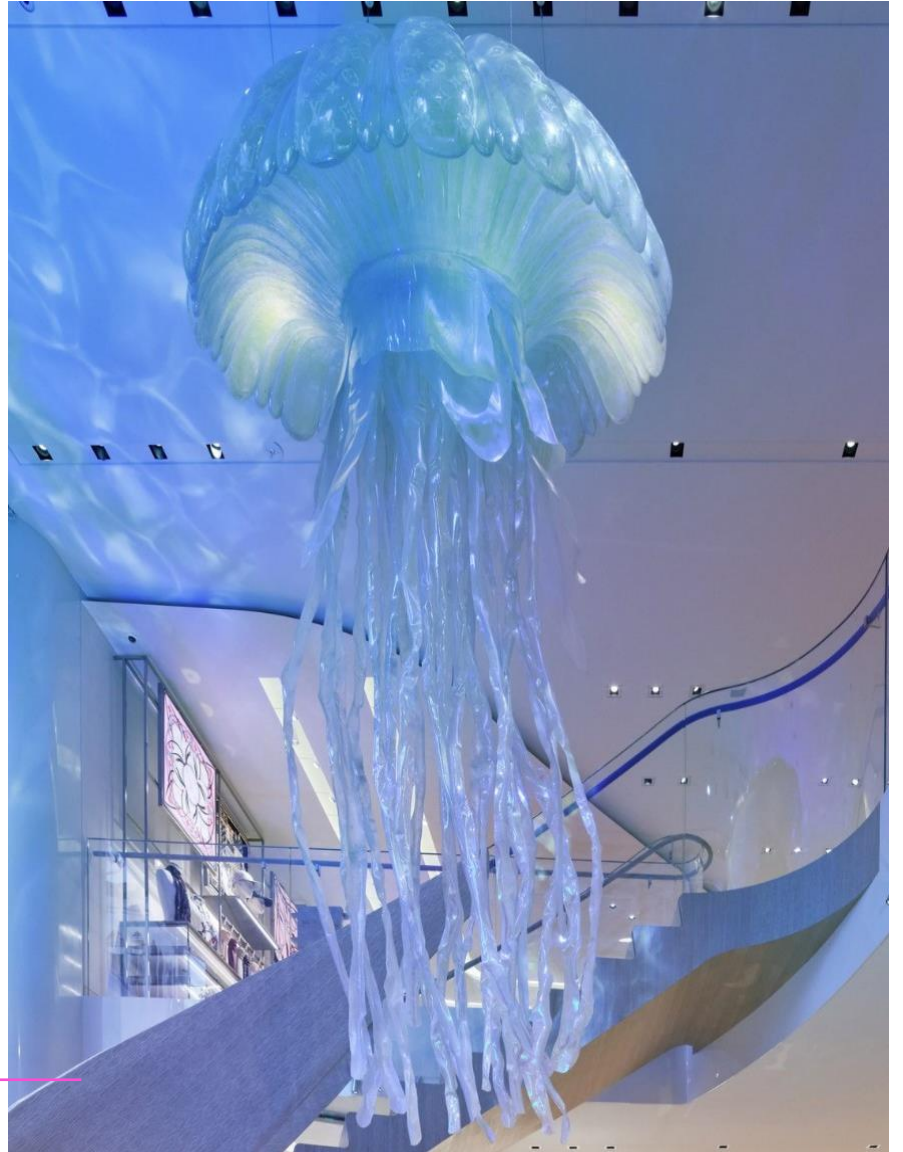
- La vulnerabilità dell'Umanità
- La complessità del Pianeta
- La connessione con la Tecnologia
- La fluidità delle Identità e delle Relazioni
- La necessità di Adattamento



Medusa & Acqua

CONNESSIONI

Medusa & Acqua sono connesse perché il ciclo di vita di alcune specie, comporta cambiamenti di fase simili alle trasformazioni dell'acqua nei suoi diversi stati





Medusa & Acqua

TRASFORMAZIONE DI STATI

La fase di solido (anemoni), liquido/gel (medusa), gassoso/mousse (dispersione uova/spermatozoi) e lo stato, vapore acqueo nell'atmosfera, quando la medusa giunta alla fine della sua vita ritorna ad essere acqua, in un ciclo di eterna trasformazione





La Medusa in cosmetica

Reinterpretazioni delle trasformazioni
in forme cosmetiche



SOLIDO



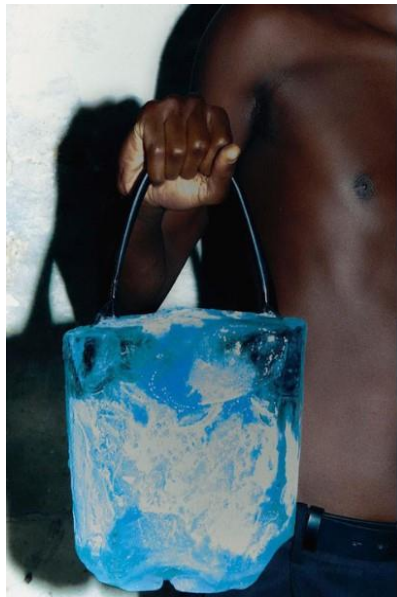
LIQUIDO/GEL



GASSOSO/MOUSSE



VAPORE ACQUEO





SeaWaves Hand Soap

452_E_1



Phase	Ingredients	INCI
A	Zetesap C11 (1)	Propylene Glycol (and) Water (and) Sodium Stearate (and) Sodium Laureth Sulfate (and) Sorbitol (and) Glycerin (and) Sodium Laurate (and) Etidronic Acid
	Fragrance	/
B	Campo Siddha Neer Kaddal Neelam (2)	Melia Azadirachta Leaf Extract (and) Melia Azadirachta Flower Extract (and) Corallina Officinalis Extract (and) Coccinia Indica Fruit Extract (and) Solanum Melongena (Eggplant) Fruit Extract (and) Aloe Barbadensis Flower Extract (and) Ocimum Sanctum Leaf Extract (and) Ocimum Basilicum (Basil) Flower/Leaf Extract (and) Curcuma Longa (Turmeric) Root Extract (and) Aqua (Water)
	Campo Siddha Neer Pazchai (2)	Melia Azadirachta Leaf Extract (and) Melia Azadirachta Flower Extract (and) Aqua (Water)

Viscosity 23° ± 2°C (rpm 5, 1 min, RV) solid

pH (23° ± 2°C) N.A.

(1) Zschimmer&Schwarz
 (2) Campo Research



SeaFoam Solid Cleansing Bar

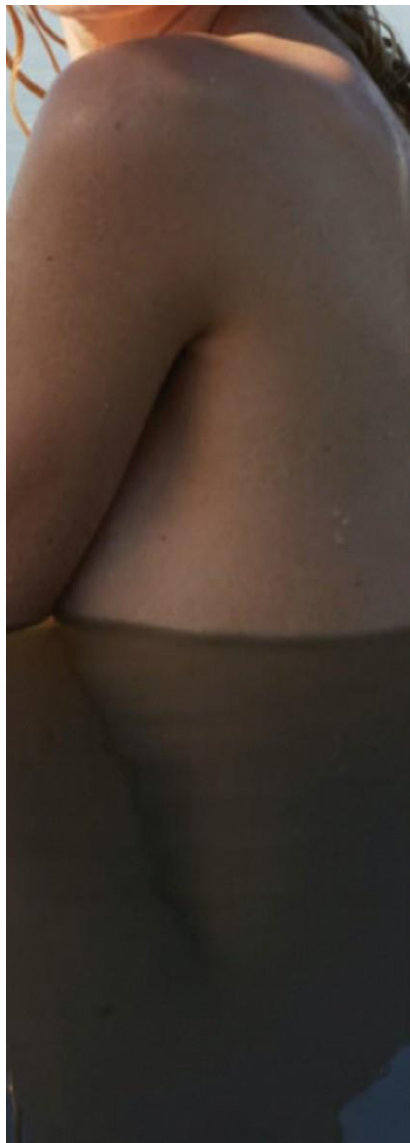
448_C_1



Phase	Ingredients	INCI
A	Protelan AGL 95 PV (1)	Sodium Lauroyl Glutamate
	Metaupon™ KMT 30 (2)	Sodium Methyl Cocoyl Taurate
	Betafib® ETD (3)	Cellulose, Cellulose Gum
	Carboxyline® 25 D Powder (3)	Sodium carboxymethyl inulin
	Quatin® 350 UP-D Powder (3)	Hydroxypropyltrimonium Inulin
	CBP Inulin (3)	Inulin
	Sorbosil TC 15 (4)	Hydrated Silica
	Citric Acid	Citric Acid
	Sodium Bicarbonate	Sodium Bicarbonate
	Surfacare HA MW (5)	Sodium Hyaluronate
	Sodium Benzoate	Sodium Benzoate
	Disodium EDTA	Disodium EDTA
B	Glycerin	Glycerin
	Jeechem® NDA-CC (2)	C13-14 Alkane
	Campo Siddha Medico Botanical Extracts Yenai/Thool* (6)	Upon request
	Fragrance	/
	Viscosity 23° ± 2°C (rpm 5, 1 min, RV)	N.A.
	pH (23° ± 2°C) (1% in water)	5.0-5.5

*Campo Siddha Medico Botanical Extracts have also been applied to the formula to give a natural colour

- (1) Zschimmer&Schwarz
- (2) Vantage
- (3) Cosun Biobased Experts
- (4) PQ Corporation
- (5) Surfachem
- (6) Campo Research





Under ICEs Dew

436_C_5



Phase	Ingredients	INCI
A	Water	Aqua
	Glycerin	Glycerin
	Betafib® ETD (1)	Cellulose (and) Cellulose Gum
	SeaBalance 2000 (2)	Sargassum Fluitans/Natans Extract, Xanthan Gum, Pentylene Glycol
B	Protelan PCA 40 (3)	Sodium PCA, Glycerin
	Preservative & Fragrance	/
C	Citric Acid	Citric Acid
D	Water	Aqua
	Skin Save™ (4)	Capparis Spinosa fruit extract, Opuntia ficus-indica stem extract, Olea Europaea leaf extract, Maltodextrin
	HydroSal® SalCool (5)	Propylene Glycol, Ethyl Menthane Carboxamide, Menthyl Lactate, Methyl Diisopropyl Propionamide, Hydroxypropylcellulose, Isopropyl Palmitate, Phenoxyethanol, Silica, Ethylhexylglycerin
E	BP-Triluronic® Acid Solution (6)	Water (and) Sodium Hyaluronate
	Alga Filler (7)	Aqua, Pentylene Glycol, Codium Tomentosum Extract, Citric Acid
F	Campo Siddha Neer Kaddal Neelam (8)	Melia Azadirachta Leaf Extract (and) Melia Azadirachta Flower Extract (and) Corallina Officinalis Extract (and) Coccinia Indica Fruit Extract (and) Solanum Melongena (Eggplant) Fruit Extract (and) Aloe Barbadosensis Flower Extract (and) Ocimum Sanctum Leaf Extract (and) Ocimum Basilicum (Basil) Flower/Leaf Extract (and) Curcuma Longa (Turmeric) Root Extract (and) Aqua (Water)
	Diamond Sparkle White (9)	Calcium Aluminum Borosilicate, Titanium Dioxide, Tin Oxide

Viscosity 23° ± 2°C (rpm 5, 1 min, RV) 8000-10000 mPa.s

pH (23° ± 2°C) 5.0-5.5

- (1) Cosun Biobased Experts
- (2) Carbonwave
- (3) Zschimmer&Schwarz
- (4) Bionap
- (5) Salvona Encapsulation Technologies
- (6) Vantage
- (7) Agrimer
- (8) Campo Research
- (9) Sandream Specialties



Cleansing Jellyfish

444_C_3



444_C_3 - W/O Emulsion

Phase	Ingredients	INCI
A	Sebumol PGPR (1)	Polyglyceryl-3 Polyricinoleate
	Dicaprylyl Ether	Dicaprylyl Ether
	Jeechem® NDA-CC (2)	C13-14 Alkane
	Opuntia Oil (3)	Opuntia ficus-indica seed oil
	Tomato Oil (3)	Solanum lycopersicum seed oil
	Cardo Oil (3)	Cynara cardunculus seed oil
B	Water	Aqua
	MgSO ₄ * 7 H ₂ O	Magnesium Sulphate Eptahydrate
	Glycerin	Glycerin
	Fragrance	/
	Preservative	/
C	Campo Siddha Indra Neelam Thool (4)	Melia Azadirachta Leaf Extract (and) Melia Azadirachta Flower Extract (and) Corallina Officinalis Extract (and) Coccinia Indica Fruit Extract (and) Solanum Melongena (Eggplant) Fruit Extract (and) Aloe Barbadensis Flower Extract (and) Ocimum Sanctum Leaf Extract (and) Ocimum Basilicum (Basil) Flower/Leaf Extract (and) Curcuma Longa (Turmeric) Root Extract

Phase	Ingredients	INCI
A	444_C_3 - W/O Emulsion	(formula above)
B	Lumorol K 1000	MIPA-Laureth Sulfate (and) Laureth-4 (and) Cocamide DEA

Viscosity 23° ± 2°C (rpm 5, 1 min, RV)	N.A.
pH (23° ± 2°C)	N.A.

- (1) Zschimmer&Schwarz
- (2) Vantage
- (3) Bionap
- (4) Campo Research





Cloudy Cleansing Mousse

438_J_4



Phase	Ingredients	INCI
	Water	Aqua
	Glycerin	Glycerin
A	Protelan AGL 95 C (1)	Disodium Cocoyl Glutamate
	Metaupon™ KMT 30 MB (2)	Sodium Methyl Cocoyl Taurate
	BP-SA Niacinamide Salicylate Complex (2)	Salicylic Acid (and) Niacinamide (and) Polydextrose (and) Dextrin (and) Amylopectin
B	Dermoil HDE (3)	Isohexadecane, PPG-15 Stearyl Ether
	Hydrosal® SalCool (4)	Propylene Glycol, Ethyl Menthane Carboxamide, Menthyl Lactate, Methyl Diisopropyl Propionamide, Hydroxypropylcellulose, Isopropyl Palmitate, Phenoxyethanol, Silica, Ethylhexylglycerin
C	Campo Siddha Neer Kaddal Neelam (5)	Melia Azadirachta Leaf Extract (and) Melia Azadirachta Flower Extract (and) Corallina Officinalis Extract (and) Coccinia Indica Fruit Extract (and) Solanum Melongena (Eggplant) Fruit Extract (and) Aloe Barbadensis Flower Extract (and) Ocimum Sanctum Leaf Extract (and) Ocimum Basilicum (Basil) Flower/Leaf Extract (and) Curcuma Longa (Turmeric) Root Extract (and) Aqua (Water)
	Preservative & Fragrance	/

Viscosity 23° ± 2°C (rpm 5, 1 min, RV) <1000 mPa.s

pH (23° ± 2°C) 5.0-5.5

- (1) Zschimmer&Schwarz
- (2) Vantage
- (3) Bregaglio
- (4) Salvona Encapsulation Technologies
- (5) Campo Research





AquaHair Mist for a "Beach Waves" effect

447_D_5



Phase	Ingredients	INCI
	Water	Aqua
A	Campo Plantservative Wsr (1)	Lonicera Caprifolium Flower Extract (and) Lonicera Japonica Flower Extract (and) Aqua (Water)
	Citric Acid	Citric Acid
	Glycerin	Glycerin
	CBP Sugar Granulated Sugar Standard (2)	Sucrose
B	Quatin® 350 TQ-D (2)	Hydroxypropyltrimonium inulin
	Pentylene Glycol	Pentylene Glycol
	MgSO ₄ * 7 H ₂ O	Magnesium Sulphate eptahydrate
	Spray-dried Sea Water (3)	Maris aqua
C	Alcohol denat.	Alcohol denat.
	PEG-40 Hydrogenated Castor Oil, Trideceth-9, Aqua	PEG-40 Hydrogenated Castor Oil, Trideceth-9, Aqua
	Fragrance	/

Viscosity 23° ± 2°C (rpm 5, 1 min, RV) <1000 mPa.s

pH (23° ± 2°C) 4.5-5.0

- (1) Campo Research
- (2) Cosun Biobased Experts
- (3) Agrimer



Tech Focus

- **Alga Filler (Agrimer)**

Alga Filler is obtained from a chlorophycean algae that counteracts the visible signs of ageing by targeting loss of firmness, wrinkles and the adipose cushion.

- **BP-SA Niacinamide Salicylate Complex (Vantage)**

BP—SA Niacinamide Salicylate Complex is an effective ingredient in the treatment of sensitive skin, acne-prone skin and skin with hyperpigmentation. In addition, it is also very effective in scalp care.

- **BP-Triluronic[®] Acid Solution (Vantage)**

BP-Triluronic[®] Acid is a combination of three different molecular weight fractions of natural hyaluronic acid produced through fermentation. BP-Triluronic[®] Acid synergistically deploys its specific benefits to the epidermis and dermis, making the layers more available and receptive to the beneficial effects of all skin care actives.

- **Betafib[®] ETD (Cosun Biobased Experts)**

Betafib[®] ETD is a non-soluble cellulose-based polymer from sugar beet processing side stream. It builds a physical network in a formulation, resulting in superior suspending capability and improving viscosity. Betafib[®] ETD also works as an SPF booster.

- **Campo Siddha Medico-Botanical Extracts (Campo Research)**

Campo Siddha Medico-Botanical Extracts are bioactive colours extracted from flowers, bark, leaves, roots of herbs, twigs originating from plants of Ayurveda traditional with coloring power. It exhibits a highly stable pH resistant and UV resistant. These colours are available both in powder and liquid form, either oil soluble or water soluble.

- **Campo Plantservative Wsr (Campo Research)**

Campo Plantservative Wsr is a liquid active extracted from herbs, it has an antimicrobial protection in cosmetic and pharmaceutical applications. The incorporation is easy, it is miscible with many organic solvents, surfactants and emulsifiers.



Tech Focus

- **Cardo Oil (Bionap)**

Cardo Oil is a natural oil from cold pressing of artichoke seeds. It has a high level of phytosterols that are effective anti-inflammatory compounds; it also contains vitamin E and polyunsaturated fatty acids.

- **CBP Inulin (Cosun Biobased Experts)**

CBP Inulin is a natural, soluble fiber extracted from chicory root, it has prebiotic and moisturizing properties to support the balance of microbiome.

- **CBP Sugar Granulated Sugar Standard (Cosun Biobased Experts)**

CBP Sugar crystals can be used to mechanically exfoliate dead skin cell buildup, it is also beneficial for blemish control and helps to restore balance of the skin's natural oils.

- **Carboxyline® 25 D Powder (Cosun Biobased Experts)**

Carboxyline® CMI is derived from Inulin offers a unique combination of anti-scaling, sequestration, and dispersing properties. It is an anionically functionalized biopolymer capable of boosting the performance of detergents and cleanser.

- **Dermoil HDE (Bregaglio)**

Dermoil HDE is an odourless and low viscosity hydrocarbon denaturated with a small quantity of a polar oil that enhances the skin feeling.

- **HydroSal® SalCool (Salvona Encapsulation Technologies)**

HydroSal® SalCool is a neurocosmetic that provides the perception of freshness working on a neurological level, without physically dropping the temperature of the skin. The technology enables the extended, "time-release" performance because ingredients act in a non-competitive manner stimulating different sensory nerve endings of the skin to extend the sensation without getting adapted to it.



Tech Focus

- **Jeechem® NDA-CC (Vantage)**

Jeechem® NDA is 100% naturally-derived, created to serve as silicone alternatives. It has a soft and velvety sensorial feeling.

- **Metaupon™ KMT 30 (Vantage)**

The Metaupon™ are a range of taurate surfactants that allow the formulation of sulfate-free products that demonstrate high foaming in rinse-off products. Taurate surfactants are extremely mild, work in a broad range of pH, and even in presence of high oil concentration, making them ideal for face washes and shampoos.

- **Opuntia Oil (Bionap)**

Opuntia Oil is natural oil from cold pressing of Prickly pear seeds. It has anti-aging properties, but also soothing, protective nourishing and regenerating.

- **Lumorol K 1000 (Zschimmer&Schwarz)**

Lumorol K 1000 is a water free surfactant blend of anionic and nonionic surfactants. It is possible to achieve a clear formulation that can turn it into a classical O/W emulsion by diluting it with water during usage.

- **Protelan AGL 95 PV (Zschimmer&Schwarz)**

Protelan AGL 95 PV is based on vegetable raw materials, can be combined with anionic, nonionic and amphoteric surfactants. It is mainly used as a co-surfactants in mild formulations or as a co-emulsifier in emulsions.

- **Quatin® 350 TQ-D (Cosun Biobased Experts)**

Quatin® is a novel cationic biopolymer derived from chicory roots which provides conditioning and moisturization to hair, skin and shower products. It provides strong coacervation to deposit active ingredients, natural oils, or silicones and fragrances to the surfaces whether for hair or skin, without build-ups. It also provides creamy and rich foam to rinse-off applications.



Tech Focus

- **SeaBalance 2000 (Carbonwave)**

SeaBalance 2000 is an anionic O/W emulsifier obtained from the upcycle of Sargassum (Gulfweed) a floating seaweed. It is suitable for cold process and it works with a wide range of emollients.

- **Sebumol PGPR (Zschimmer&Schwarz)**

Sebumol PGPR is a PEG-free W/O emulsifier of vegetable origin. Can be easily mixed with oils, due to its liquid form, and have an intensive caring effect on the skin.

- **Skin Save™ (Bionap)**

Skin Save™ is an active ingredient upcycled from prickly pear cactus, olive leaves and capparispinosa. It has many benefits such as: reduction of skin redness, itching, burning or stinging and as protection against UV-induced erythema and premature ageing.

- **Spray-dried Sea Water (Agrimer)**

Derived from the Breton Sea the Spray-dried Sea Water is very pure and contains a lot of elements, such as macro-minerals (Calcium, Magnesium, etc.) and trace-elements (Iodine, Iron, etc.).

- **Tomato Oil (Bionap)**

Tomato Oil is a natural oil from cold pressing of tomato seeds. It is an excellent antioxidant and also photoprotective against UV rays.

- **Zetesap C11 (Zschimmer&Schwarz)**

Zetesap C11 is a hot melt compound for the manufacture of high quality transparent bars for personal wash. It combines effective cleansing and pleasant skin feel with the visual impact offered by its superior clear appearance and excellent foam.



DISCLAIMER:

The information and recommendation in this publication are to the best of our knowledge and belief accurate at the date of publication. Nothing herein is to be construed as a warranty, express or otherwise. In all cases, it is responsibility of the user to determine the applicability of such information or the suitability of any products. Trade names named are property of the respective company. The formulation reported above are only guidelines for the best use of raw materials. They do not represent your final formulation. We are not held responsible for any unsuccessful trial.