

GRANPOWDER BBP-700

100% NATURALLY DERIVED, BIO-BASED POWDER

PERFORMANCE FEATURES AND BENEFITS:

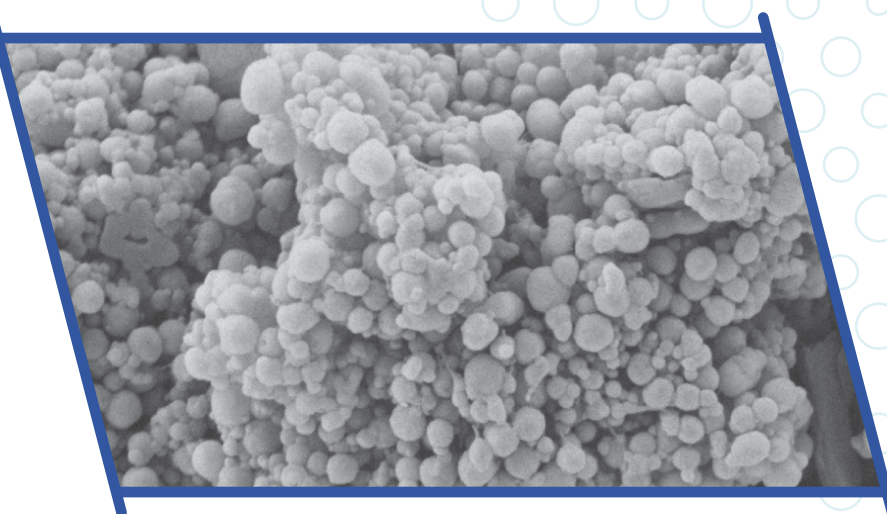
- Biodegradable microsphere powder
- Natural and Cosmos formulations
- GMO-free and non-microplastic by ECHA definition
- Sensory improvement for all formulation types
- Removes greasy feel from organic sun care formulations
- Optical properties include soft effect and light diffusion
- Compliments **GRANSENSE** elastomer technologies
- Suggest use level of 1-10% application dependent
- Particle size average: 2-10um
- Oil absorption: (see reverse)

BIODEGRADABILITY RESULTS:

- ISO 16128 value: 1.00
- ISO 17556: Biodegradable
- OECD 306: Biodegradable
- Cosmos approval: Yes

DESCRIPTION: Innovative fused composite of a bio-fermented powder and amino acid derivative.

INCI: Saccharomyces Ferment (and) Lauroyl Lysine



TEST METHODS AND DEFINITIONS:

- ISO 16128-2:2017 describes approaches to calculate natural, natural origin, organic and organic origin indexes that apply to the ingredient categories.
- ISO 17556: 2019 (plastics) determines the ultimate aerobic biodegradability in soil by measuring the oxygen demand in a respirometer or the amount of carbon dioxide evolved.
- Biodegradability (OECD 306) measures biodegradation of a substance over a defined window of time through analysis of indirect parameters in closed system holding seawater.
- Cosmos standard is a harmonized certification to define common requirements and definitions for organic and/or natural cosmetics by the effort of COSMOS-standard AISBL.



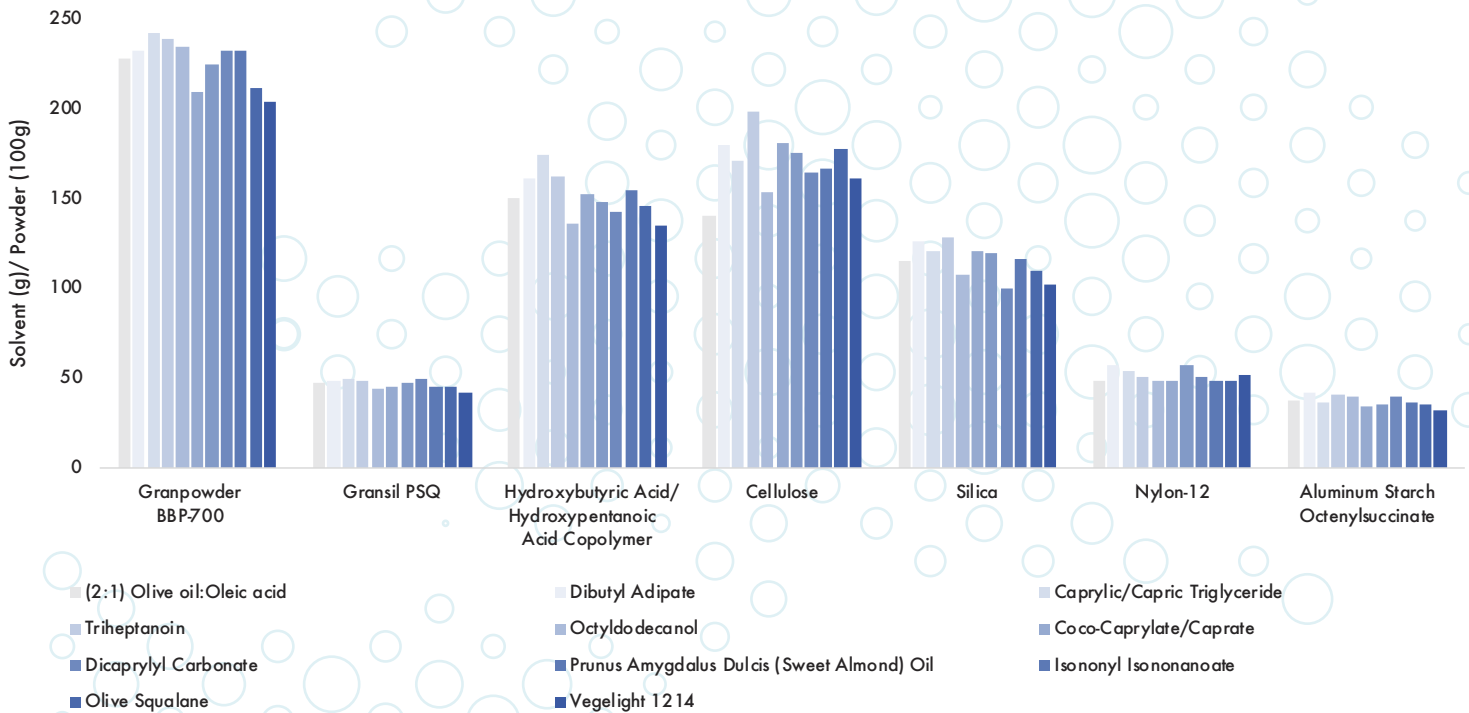
www.grantinc.com

Technical Support? formula@grantinc.com

FOLLOW US ON  Instagram @grant.industries

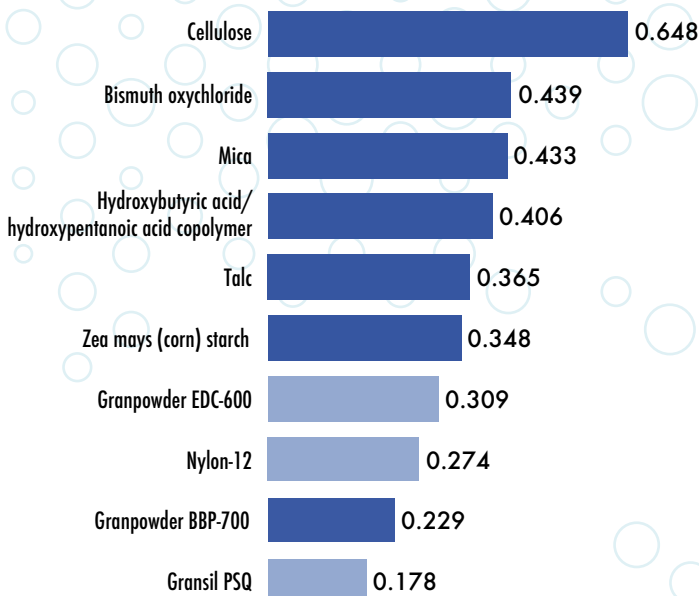


LIQUID ABSORPTION OF POWDERS



SLIDING FRICTION/LUBRICITY

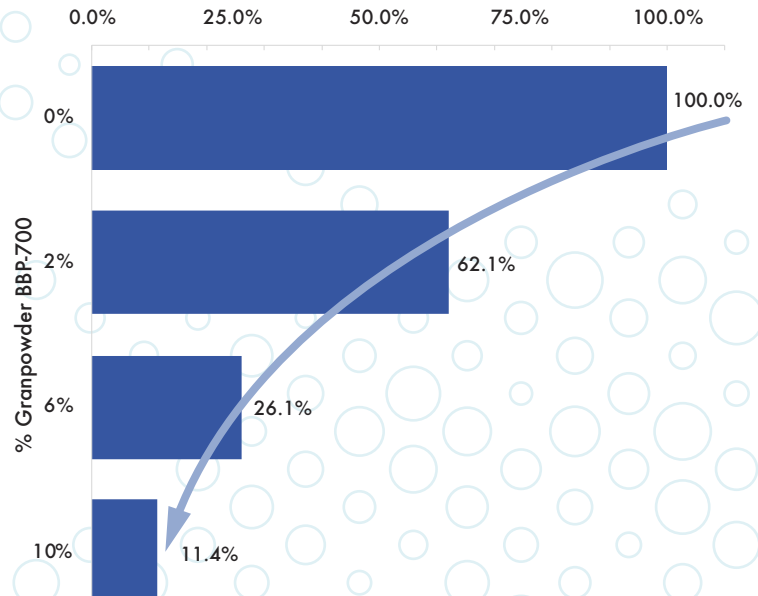
Texture Analyzer TA.XT Plus



The lower the value, the better the glide.
■ Naturally derived/ ■ Synthetic based

OPTICAL PROPERTIES

Natural-Me-Time Mousse Foundation, G105-394.01



Increasing percentage concentration of **GRANPOWDER BBP-700** decreases Relative Shine.