



HEALTH BEAUTY WELLBEING

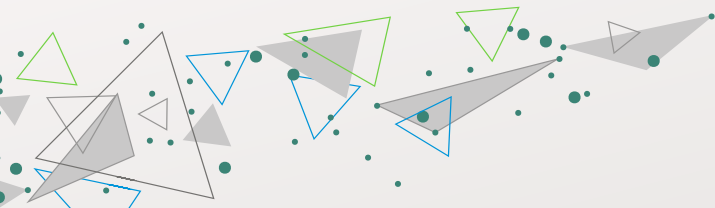
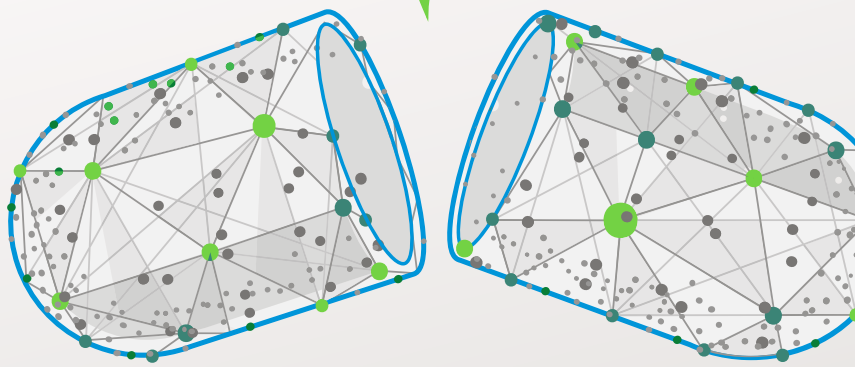
LCM

S P A

PRODUCT LIST

LCM s.p.a.

NUTRACEUTICAL DIVISION





IMPORT LICENCE FOR
ACTIVE PHARMACEUTICAL
INGREDIENTS (API)
ISSUED BY AIFA
(Italian Medicines Agency)

NUTRACEUTICAL DIVISION

L.C.M. started in 1982 as agent and distributor of pharmaceutical and cosmetic raw materials.

Now, more than 30 years later, well-established partnerships with the leading manufacturer of the products used as dietary supplements, allow us to be considered an important partner for all the Companies involved in the production, marketing and sales of Nutraceuticals.

We offer to our customers a products portfolio which include active ingredients, herbal extracts (standard and organic), animal extracts, excipients and other natural ingredients.

We work in compliance with the Good Trade and Distribution Practices requirements, our Document Management System guarantees full traceability of all products and related commercial transactions.

All our products are fully in compliance with the European Regulations of Food Supplements. This standards are certified and guaranteed by our quality department which take care of periodical inspection and approval of our partners.

We have a well trained and very committed staff which can guarantee professionalism and knowledge of local markets in order to satisfy customers needs.

The management of our warehouse is outsourced to a specialized logistics company, certified ISO 9001:2000. We benefit from a high financial rating and a solid corporate capital.

Qualified Regulatory Department

Strong Supply Chain Control

Total Quality Management

Technical Sales Skills

Stock Point

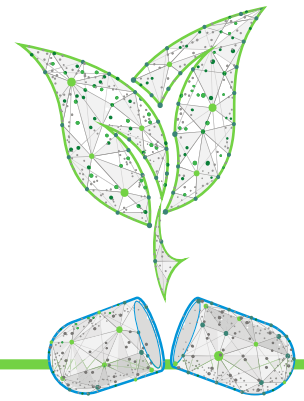
Compliance with GTDP requirements



HEALTH BEAUTY WELLBEING

lcmspa.it

Nutraceutical Product List



ACTIVE INGREDIENTS

Alpha Lipoic Acid

Beta Carotene

Natural

Synthetic

Chondroitin Sulphate

ex Shark

ex Marine

ex Porcine

ex Bovine

ex Chicken



Coenzyme Q10

Pure

99-101%

Water Dispersible

10%

Water Dispersible

20%

Water Dispersible

40%



Coniugated Linoleic Acid

DL-Choline bitartrate

Folic Acid

Fucoxanthin 10% UV

Inositol

L-Glutatione

Phosphatidylserine

Soy source

Sunflower source

ACTIVE INGREDIENTS

Psyllium

Different Grades

Different Colors

Different Mesh

Red Yeast Rice

100% Natural

Different assays in Monacolin K:

0,4% Monacolin K

1,5% Monacolin K

3,0% Monacolin K

5,0% Monacolin K



SAM-E

Sodium Hyaluronate

different molecular weight per request

Hyabest J

Hyabest (S)LF-P

Hyabest (S)LF5-A

Hyabest (A)

SH 1,2-1,6 Pharma Grade for Medical Devices

SH 2,0-2,6 Pharma Grade for Medical Devices

SH 2,7-3,6 Pharma Grade for Medical Devices



Sterols

Stevia Extract

RISO ROSSO FERMENTATO

100%
NATURAL
PRODUCT

Titolo in monacolina K da 0.4% a 5%
(con identificazione forma acida e forma lattonica)



ENZYMES

Alpha Galactosidase

Beta Galactosidase (Lactase)

Cellulase

Diastase

Lipase

Amilase

Protease



HEALTH BEAUTY WELLBEING

LCM
S P A

NUTRACEUTICAL DIVISION



ENZIMI

PROTEIN Digestion

Protease A-DS

Protease DS

STARCH Digestion

Amylase DS

Diastase DS

LIPID Digestion

Lipase DS

Lipase DF-DS

CELLULOSE Digestion

Cellulase DS

GAS Prevention

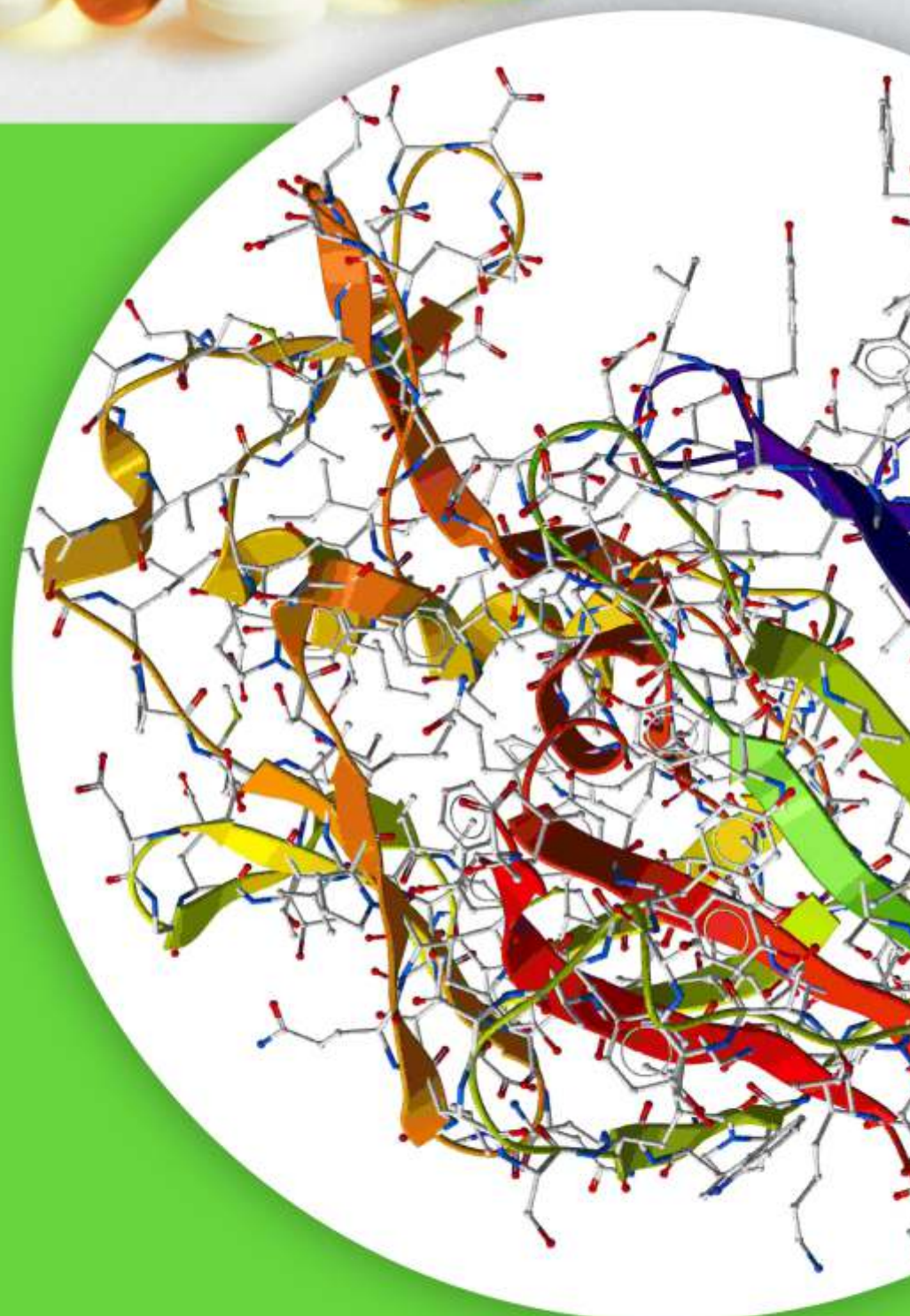
Alpha-Galactosidase DS30

LACTOSE Intolerance

Lactase DS100

Suppression of Blood Glucose Level

TG "Amano" DS





MARINE PRODUCTS

Calcilyss	Bone Fortification
Calcium hydroxyapatite	Bone Fortification
Cartidyss	Collagen Type II - Joints Health, Skin Beauty And Hair
Collyss	Collagen Type I - Joints Health, Skin Beauty And Hair
Cerebryss	Brain Nutrition and Cognitive Health
Tensidyss	Fish Peptones - Cardiovascular Protection
Peptidyss	Fish Peptones - Stress Management
Mannimag	Magnesium from sea water

Dal mare...



Un prodotto naturale senza effetti collaterali
Un rimedio per la gestione dei sintomi
da stress e disturbi del sonno

Dose consigliata giornaliera:
300mg



Formulazioni Galeniche consigliate:
compresse, capsule e softgel

PEPTIDYSS®

Insonnia

Eemicrania

Asma

Cefalea

Depressione

Ansia

Tachicardia

Orticaria

Studi provano l'efficacia dei peptidi nella cura dello stress





VITAMINS

Mena Q7 Vitamin K2

Natural Product Line (fermentation):

- Natural 2,000 ppm Powder (GMS)
- Natural 1,000 ppm Powder (GMS)
- Natural 1,500ppm Oil (Sunflower Oil)
- Natural LIQUID 2,000 ppm Water Soluble
- Natural POWDER 2,000 ppm Water Dispersible
- Natural 2,000ppm Powder (MCC)

PharmaPure Product Line (synthetic):

- PharmaPure 10,000 ppm MCC Powder
- PharmaPure 2,000 ppm MCC Powder
- PharmaPure 1,000 ppm MCC Powder
- PharmaPure 10,000 ppm MCT Oil
- PharmaPure 1,500 ppm MCT Oil

CryoCap (encapsulated product):

- Natural CryoCap powder 2000
- PharmaPure CryoCap powder 2000

Vitamin A

- oil
- powder

Vitamin B3

Vitamin B12

- Cyanocobalamin
- Methylcobalamin

Vitamin C

Vitamin D3

- oil
- powder

Vitamin E



Puro. Sicuro. Innovativo.

La miglior forma di vitamina K2
cl clinicamente validata presente sul mercato.

MenaQ7[®]
Vitamin K2 as MK-7

- Disponibile in polvere ed olio
- Elevata biodisponibilità e purezza
- Privo di soia e allergeni noti

Mena Q7 Natural

- Prodotto da fermentazione su ceci con *Bacillus Licheniformis*
- Legami 100% *trans*
- MK-7 puro superiore al 96%
- Assenza di isomeri *cis*

Mena Q7 PharmaPure

- Prodotto di origine sintetica
- Legami 100% *trans*
- MK-7 puro superiore al 98%
- Assenza di isomeri *cis*



**Benessere
della crescita**



**Benessere
Cardiovascolare**



**Benessere
delle ossa**

AMINO ACIDS

FROM FERMENTATION

L-Cysteine Hydrochloride Monohydrate

L-Cysteine Hydrochloride Anhydrous

L-Cysteine Base

N-Acetyl-L-Cysteine

S-Carboxymethyl-L-Cysteine

L-Cystine

L-Cytrulline

L-Cytrulline DL-Malate (1:1)

L-Cytrulline DL-Malate (2:1)

L-Ornithine Monohydrochloride

L-Ornithine L-Aspartate

L-Arginine

L-Arginine Monohydrochloride

L-Lysine Monohydrochloride

L-Methionine

L-Threonine

L-Tryptophan

iBCAA

L-Isoleucine

L-Leucine

L-Valine

L-Glutamine





HEALTH BEAUTY WELLBEING

LCM SPA

NUTRACEUTICAL DIVISION

AMINATURE

Better life better health
with safe Amino Acids



Nutraceutical



Sports Nutrition



Food Processing



Beauty Care



Product Advantage



Vegan



NON-GMO



Not from
Animal Tissue



Not from
Human Hair

Delivery from Nature Creation thru Fermentation

Amino acids and its derivatives produced through environment-friendly fermentation technology that uses raw sugar and glucose as raw material.

Fermentation Process



BIO

A Global Leader in
Advanced Food Grade
Amino acids



AMINO ACIDS

FROM EXTRACTION



L- Cystine

L-Tyrosine

Standard

Low Phenylalanine

Very Low Phenylalanine

CARNITINE

L-Carnitine base USP

L-Carnitine L-tartrate

L-Carnitine HCl

L-Carnitine Fumarate

Acetyl L-Carnitine HCl

PROBIOTICS

Bacillus Clausii

Bacillus Coagulans

Bacillus Licheniformis

Bacillus Pumilus

Bacillus Subtilis

Enterococcus Faecalis

Enterococcus Faecium

Enterococcus Mundtii

Pediococcus Acidilactici

Pediococcus Pentosaceus

Saccharomyces Boulardii

Saccharomyces Cerevisiae

Streptococcus Thermophilus

BIOSTIMULANTS

Bacillus Licheniformis

Bacillus Pumilus

Bacillus Subtilis

Bacillus Megaterium

Bacillus Polymyxa

Saccharomyces Cerevisiae

EXCIPIENTS

COMPRECEL Cellulose Microcrystalline

Food Grade: 101-102-103-105-112-113-212-200-301-302

DISOLCEL Croscarmellose Sodium

NEOCEL Co-processed Microcrystalline Cellulose and Sodium Carboxymethylcel

NEO-C01 NEO-C11 NEO-C81 NEO-C91



Polyvinylpyrrolidone (PVP)

Sodium Glicine Carbonate

Monoammonium Glycyrrhizinate

Beeswax

Carnauba wax

Glycerin

Lactose

OMEGA 3

ULTRA PURITY

Omega 3H	EPA700	EPA: 700 mg/g Min
Omega 3H	DHA700	DHA: 700 mg/g Min
Omega 3H	7505	EPA: 75%A Min - DHA: 5%A
Omega 3H	7010	EPA: 70%A Min - DHA: 10%A
Omega 3H	0575	EPA: 5%A Min - DHA: 75%A Min
Omega 3H	1070	EPA: 10%A Min - DHA: 70%A Min

EPA RICH (EE - TG)

Omega 3H	6015	EPA: 60%A Min - DHA: 15%A Min
Omega 3H	5525	EPA: 55%A Min - DHA: 25%A Min
Omega 3H	5020	EPA: 50%A Min - DHA: 20%A Min
Omega 3H	1030	EPA: 10%A Min - DHA: 30%A Min
Omega 3H	4020	EPA: 40%A Min - DHA: 20%A Min
Omega 3H	3624	EPA: 36%A Min - DHA: 24%A Min
Omega 3H	3322	EPA: 33%A Min - DHA: 22%A Min
Omega 3H	3020	EPA: 30%A Min - DHA: 20%A Min

DHA RICH (EE - TG)

Omega 3H	2050	EPA: 20%A Min - DHA: 50%A Min
Omega 3H	1050	EPA: 10%A Min - DHA: 50%A Min
Omega 3H	2010	EPA: 20%A Min - DHA: 10%A Min
Omega 3H	1040	EPA: 10%A Min - DHA: 40%A Min



MINERAL SALTS FOOD GRADE

CALCIUM

Citrate

Gluconate

Glycerophosphate GIVOCAL

Lactate

Liquid Glycerophosphate 50%

MAGNESIUM

Citrate

Gluconate

Glycerophosphate GIVOMAG

Lactate

Liquid Glycerophosphate 50%

ZINC

Citrate

Gluconate

Lactate



HEALTH BEAUTY WELLBEING

LCM
S P A

NUTRACEUTICAL DIVISION



GIVOCAL

- GIVOCAL™ Calcio Glicerofosfato è una risorsa di calcio altamente biodisponibile.
- Di eccellente assorbimento, studi clinici evidenziano effetti positivi sullo sviluppo di ossa e denti.
- Perfetto rapporto Ca/P per la mineralizzazione ossea.
- Polvere bianca solubile, inodore ed insapore, utilizzabile per tutti i tipi di formulazione.

GIVOMAG

- GIVOMAG™ Magnesio Glicerofosfato è una risorsa di magnesio altamente biodisponibile.
- Di eccellente assorbimento, studi clinici evidenziano effetti positivi su muscoli e sistema cardio vascolare.
- Alto contenuto di Magnesio facilmente digeribile.
- Polvere bianca solubile, inodore ed insapore, utilizzabile per tutti i tipi di formulazione.

Il miglior vettore per il trasporto del calcio e del magnesio nel tratto gastro-intestinale.

GLICEROFOSFATI



LCM spa:

Via Mazzini, 33 - 20099 Sesto San Giovanni (Mi) - Tel +39 02-2627031 - lcm-group.it



MINERAL SALTS FOOD GRADE

VITAMIN B3

Vitamin B3

COPPER

Gluconate

MANGANESE

Gluconate

SODIUM

Lactate

IRON

Gluconate GIVOBIO Fe 601

POTASSIUM

Lactate

Liquid Glycerophosphate 50%

Liquid Glycerophosphate 75%

HYDRA 4G

Mix of

GIVOMAG

GIVOCAL

POTASSIUM CITRATE

SODIUM CITRATE

Un passo oltre l'idratazione



PERDITA DI MINERALI

Durante la sudorazione vengono persi circa 460 mg/L

- 1.4 g/L di **Sodio**
- 300-400 mg/L di **Potassio**
- 40 mg/L di **Calcio**
- 4.8 mg/L di **Magnesio**

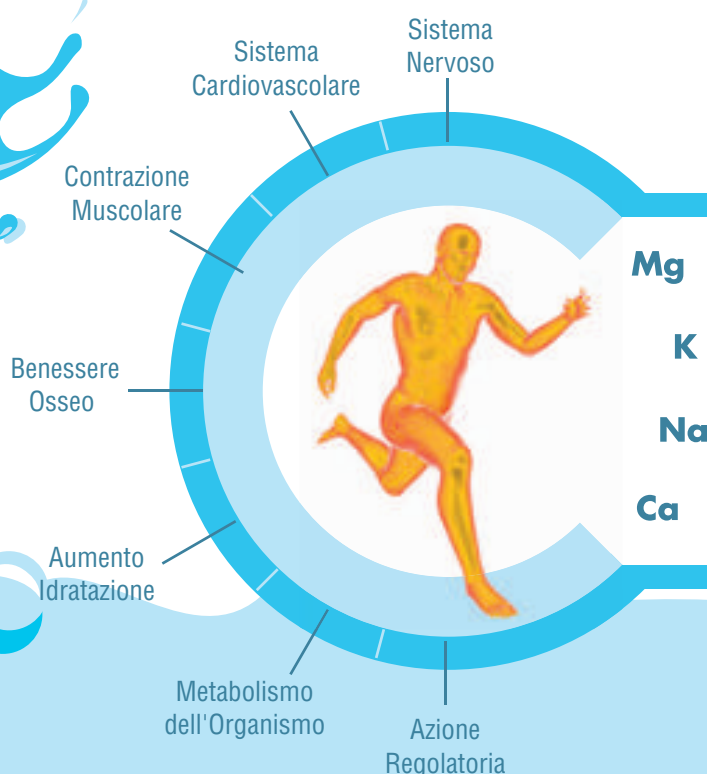
Studi dimostrano che gli atleti in media reintegrano solo il 30-70% dei Sali minerali persi con la sudorazione. Il reintegro con sola acqua è insufficiente.

HYDRA4G

PROGETTATO PER COMPENSARE LA PERDITA DI SALI MINERALI



BENEFICI SULLA SALUTE



Scegli La Miglior Formula Per Il Tuo Sport Drink

SUPPORTO + IDRATAZIONE + EQUILIBRIO

Potassio
citrato



Magnesio
Glicerofosfato



Sodio
Citrato



Calcio
Glicerofosfato

PERCHÉ SCEGLIERE **HYDRA4G**

Hydra 4G è un mix di sali chelati in polvere:
Calcio, Magnesio, Sodio e Potassio.

Sono stati selezionati per le loro importanti funzioni fisiologiche durante l'esercizio fisico.

MINERAL SALTS FOOD GRADE

CALCIUM

Calcium Carbonate (Heavy)

Calcium Carbonate (Light)

Calcium Citrate (60 mesh)

Calcium Citrate (800 mesh)

L-Calcium Lactate

IRON

Ferrous Sulfate (heptahydrate)

Ferric Sodium edetate

Ferrous Fumarate

Ferrous Fumarate (800 mesh)

Ferric Pyrophosphate

MAGNESIUM

Magnesium Oxide

Magnesium Sulfate (Heptahydrate)

Magnesium Sulfate (Dried)

Magnesium Carbonate

MANGANESE

Manganese Sulfate

Gluconate

MINERAL SALTS FOOD GRADE

ZINC

Zinc Oxide (ZnO)

Zinc Sulfate (Heptahydrate)

Zinc Gluconate

Zinc Citrate

CALCIUM

Direct Compression Granules

Calcium Carbonate (Heavy)

Calcium Citrate

MAGNESIUM

Direct Compression Granules

Magnesium Oxide

Magnesium Carbonate

COPPER

Spray Dry Dilutions

Copper Sulfate Dilutions

Copper Gluconate Dilutions

SELENIUM

Spray Dry Dilutions

Sodium Selenite Dilutions

CHOLINE

Spray Dry Dilutions

Choline Bitartrate Dilutions

Choline Chloride

MINERAL SALTS FOOD GRADE

IRON

Spray Dry Dilutions

Ferric Pyrophosphate Dilutions

Ferrous Sulfate Dilutions

MAGNESIUM

Spray Dry Dilutions

Magnesium Chloride Dilutions

ZINC

Spray Dry Dilutions

Zinc Sulfate Dilutions

IODINE

Spray Dry Dilutions

Potassium Iodine Dilutions

Potassium Iodate

CHROMIUM

Spray Dry Dilutions

Chromium Chloride Dilutions

MOLYBDENUM

Spray Dry Dilutions

Sodium Molybdate Dilutions

MANGANESE

Spray Dry Dilutions

Manganese Sulfate Dilutions

PIDOLATES

Magnesium Pidolate

Calcium Pidolate

Potassium Pidolate

Zinc Pidolate

Estratto di ANDROGRAPHIS PANICULATA

ParActin® è un prodotto esclusivo nutraceutico, brevettato, standardizzato, supportato da studi scientifici.

Dosaggio: 300 mg. al giorno; due somministrazioni da 150 mg. **Prodotto senza controindicazioni**

**benessere
articolare**



**benessere
osseo**



**recovery
muscolare**

PARACTIN®



**benessere
cartilagineo**



**anti
infiammatorio**



**sistema
immunitario**



HERBAL EXTRACTS

GREEN BANANA POWDER

NuBana N100

NuBana P500

NuBana RS65



PARACTIN

Andrographys Paniculata



MORINGA OLEIFERA

Moringa Oleifera seeds powder

Moringa Oleifera leaf powder



NuBana™

GREEN BANANA FLOUR

IL FRUTTO DEL BENESSERE

TIPOLOGIE DI PRODOTTI

P500 N100 RS65

**PREBIOTICO
NATURALE
DA BANANA**

**AMIDO
LENTAMENTE
DIGERIBILE**

**FONTE
DI FIBRA
INSOLUBILE**

**FONTE
NATURALE
DI MAGNESIO
E POTASSIO**

**ALTO
CONTENUTO
IN AMIDO
RESISTENTE**

HERBAL EXTRACTS

We can supply a wide kind of herbal extract in compliance with EP and USP requirements; *standard and organic products.*

Acerola Fruit Powders - Vitamin C

Acerola Fruit Powder Type 1000	min. 17% natural Vitamin C
Acerola Fruit Powder Type 1001	min. 25% Vitamin C (standardized with Ascorbic Acid)
Acerola Fruit Powder Type 2000	min. 20% natural Vitamin C
Acerola Fruit Powder Type 3000	min. 25% natural Vitamin C

Alpha Aloe ®

Leaf Extract, oily	on basis soybean oil
Gel pure 1:1	
Gel Concentrate 10:1	
Concentrate Powder 201	100:1, spray dried
Concentrate Powder 301	200:1, spray dried
Concentrate Powder 301	200:1, freeze dried

Freshplant Pressjuice

Artichoke Pressjuice Powder	min. 0.6% total Caffeoylquinic acid derivatives(Cca) min. 0.25% Cynarin
Dandelion Pressjuice Powder	min. 1% Gentiobiose (Cca)
Echinacea Pressjuice Powder	min. 3.0% Cichoric acid (HPLC)
Echinacea Pressjuice	min. 0.15% Cichoric acid
Hawthorn Pressjuice Powder	min. 0.6% Flavonoids calculated as Hyperosid
St. John's Wort Pressjuice Powder	min. 3% (HPLC)
Stinging Nettle Pressjuice Powder	min. 4.5 % (Cca) min. 40 mg/100 g total flavonoids (HPLC)



NATURAL OILS

Avocado Oil, refined	
Macadamia Nut Oil, refined	
Rose Hip Seed Oil, cold pressed	
Rose Hip Seed Oil, refined	deacidified, deodorized
St. John's Wort Oil (Oleum Hyperici)	on basis peanut oil made of fresh St. John's Wort flowers Hypericin
Wheat Germ Oil, crude	
Wheat Germ Oil, refined, Ph.Eur.	bleached, deacidified, deodorized, winterized mild taste max. 2 % Trans Fatty Acids natural Vitamin E refined in Germany

PLANT EXTRACTS - Fruit Powders

Artichoke Leaves Extract Powder	min 2,5 % Caffeoylquinic acids calculated as Chlorogenic Acid
Beet Root Fruit Powder	2,5-5,7 % Tritationable acids calculated as citric acid monohydrate
Birch Leaves Extract Powder	11-33mg/g hyperosid
Camomile Flowers Extract Powder	0.5 - 1.7 % essential oils
Dandelion Extract Powder	1.0 – 60.0 mg/g 1-O-(3-β-D-glucosido-caffeoyl) Gentiobiose calculated as Rutoside
Devil's Claw Root Extract Powder	2,0 - 3,0% Harpagoside 1.0 - 4.0 % Harpagoside (HPLC)
Field Horsetail Extract Powder	1,3 - 10% soluble silicates (calc. As ortho-silicic acid)
Green Tea Extract Powder	18 - 30% Polyphenols
Hawthorn Extract Powder	min. 2.5% Flavonoids calculated as Hyperosid
Hop Extract Powder	min. 2% total Humulon
Passion Flower Extract Powder	0.8 - 5.0% Vitexin and Isovitexine calculated as Vitexin
Peppermint Leaves Extract Powder	Rosmarinic acid batch-specific determination
Red Sorrel Extract Powder	18 - 30% total amount of plant acids
Rose Hip Extract Powder	min. 4% Vitamin C
Saw Palmetto Fruits Extract Powder	
St. John's Wort Extract Powder	0.09 - 0.27% total Hypericine calculated as Hypericin max. 0.45% total Hyperforine calculated as Adhyperforin min. 5,4% flavonoids calculated as rutoside
Valerian Root Extract Powder	0.25 - 0.90% Sesquiterpene acid calculated as Valerenic acid
Willow Bark Extract Powder	min. 15 % natural Salicine



CAVIAR EXTRACTS

Caviar Phospholipids , premium grade	approx. 20 - 30 % Phospholipids min. 30 % Omega3
Caviar Protein Extract U70	water insoluble extract powder min. 70 % protein
Caviar Protein Extract W50	water soluble extract powder min. 50 % protein

BEE PRODUCTS

Propolis Extrakt Powder PAN 80	min. 80 % pure Propolis approx. 10 % natural Flavonoids calculated as Hyperosid - origin South America
Propolis Extract Powder PAN 90	min. 90 % pure Propolis approx. 10 % natural Flavonoids calculated as Hyperosid - origin South America
Propolis Liquid Extract	min. 10 % pure Propolis in H2O origin South America
Propolis Liquid Extract	min. 10 % pure Propolis in Propylene glycol origin South America
Propolis Tincture	min. 10 % pure Propolis in Ethanol origin South America
Propolis Pasty Extract	min. 80 % pure Propolis approx. 10 % natural Flavonoids calculated as Hyperosid - origin South America
Pollen Extract Powder 4:1	water soluble Origin Europe



PLANT PRODUCTS

Chlorophyll (Cu-complex, 18 %)	E-141, oil soluble paste
Chlorophyll (Mg, complex, 16 %)	E-140, oil soluble paste
Chlorophyllin-Na-Cu	water soluble
Chlorophyllin-Na-Mg	100 % natural, water soluble
Phytoprotein PAN 80®	100 % pure, min. 70 % plant protein, water soluble
Soy Protein Hydrolysate Powder	100 % pure, min. 56 % plant protein, water soluble
Wheat Germ Hydrolysate Powder	100 % pure, min. 31 % plant protein, water soluble



ANIMAL EXTRACTS

Chicken Cartilage Extract	
Desiccated liver	
Desiccated lung	
Keratin Hydrolysate Powder / CUTICULIN	water soluble scleroproteine
Liver extract	
Lung extract	
Milk Extract Powder / MILK PEPTIDE	water soluble peptide
Placenta Extract Powder	water soluble peptide
Silk Hydrolysate Powder	water soluble silk peptide
Snail Hydrolysate Powder	water soluble
Sternal Chicken Cartilage Hydrolysate	100 % pure, water soluble 70 - 80 % Collagen, approx. 20 % Mucopolysaccharide
Thymus Extract Powder (ex bovine)	water soluble peptide
Thymus Peptide (ex porcine)	water soluble peptide

STANDARDIZED HERBAL EXTRACT

Product Name	Botanical Source	Main component Content
Andrographis Paninculate P.E	Andrographis paniculata (Burm.f.) Nees	Andrographolide 10%,15%
Angelica P.E	Angelica sinensis(Oliv.)Diels	Lingustilide 1%
Artichoke P.E	Cynara scolymus L.	Caffeoylquinic Acid 13%
Artichoke P.E	Cynara scolymus L.	Caffeoylquinic acid expressed as chlorogenic acid 2,5%-Cynarin 0,5%,2,5%
Astragalus P.E	Astragalus membranaceus(Fisch.)Bge	Polysacchrides 20%,40%
Banaba Leaf P.E	Lagerstroemia speciosa (L.) Pers	Corosolic acid 2,5%
Bitter Melon P.E	Momordica charantia L.	Charantin 1% Total saponins 10%
Black Cohosh P.E	Cimicifuga foetida L.	Triterpenes 2.5% 5% 8%
Bladderwack P.E	Fucus vesiculosus L.	Fucosterol 0,2% Iodine 0,2%
Boswellia Sorrata P.E	Boswellia serrata Roxb	Boswellic Acids 65%
Butcher's Broom P.E	Ruscus aculeatus L.	Saponins calculated as ruscogenins 9%
Cactus P.E	Opuntia dillenii Haw	Flavones 2%
Cape Aloes P.E	Aloe ferox Miller	Hydroxyanthracene derivatives 20%
Casanthranol P.E	Rhamnus purshiana DC	Cascarosides expressed as cascaroside A 25%
Cassia Nomame P.E	Cassia nomame (sibe.)L.Kitagawa	Flavones 8%
Chamomille P.E	Chamomilla recutita (L.) Rausch	Total apigenin 1,2%
Chasteberry P.E	Vitex trifolia L.	Flavones 5%
Chinese Rhubarb P.E	Rheum palmatum L.	Anthraquinones 1%
Cinnamon Bark P.E	Cinnamomum cassia Presl	Polyphenols 8%,30%
Cistanche Tubulosa P.E	Cistanche deserticola Y.C. Ma	Polyphenols 18%
Cnidium Fruit P.E	Cnidium monnieri (L.)Cuss	Osthole 10%,20%,30%
Coleus P.E	Coleus barbatus Benth	Forskolin 80%
Dandelion P.E	Taraxacum mongolicum Hand.Mazz	Flavonoids 3%,5%
Devil's Claw P.E	Harpagophytum procumbens DC	Harpagoside 2,5%
Echinacea angustifolia P.E	Echinacea angustifolia DC	Echinacoside 4%
Echinacea P.E	Echinacea Purpurea (L.) Moench	Polyphenols 4%
Elderberry P.E	Sambucus williamsii Hance	Antocyanins 5%,10%
Epimedium P.E	Epimedium brevicornu Maxim	Icariin 20%,40%,50%
Eugenia Cumini P.E	Syzygium cumini(L) skeels	Ellagic Acid 2%
Euro-Bilberry P.E	Vaccinium myrtillus L.	Anthocyanins 25%
Flax Seed P.E	Linum usitatissimum L.	Secoisolariciresinol Diglucoside 20%,40%
Ganoderma Lucidum P.E	Ganoderma lucidum(Leyss.ex Fr.)Karst	Polysaccharides 10%,20%

Product Name	Botanical Source	Main component Content
Garcinia Cambogia P.E	Garcinia cambogia	Hydroxycitric Acid (HCA) 50%,60%
Gentian Root P.E	Gentiana scabra Bge	Gentiopicroside 5%
Giant Knotweed P.E	Polygonum cuspidatum Sieb. Et Zucc	Resveratrol 20%,50%,98%
Ginger P.E	Zingiber officinale Rosc.	Gingerol 5%,10%,20%,30%,40%
Ginkgo Biloba P.E	Ginkgo biloba L.	Flavones/Ginkgolides (24/6),Standard:USP,EP,CP
Ginseng Root P.E	PanaX ginseng C. A. Mey	Ginsenosides 10%,20%
Ginseng Leaf P.E	PanaX ginseng C. A. Mey	Ginsenosides 80%
Gotu Kola P.E	Centella asiatica (L.) Urb	Asiaticoside 10%,20%
Grape Leaf P.E	Vitis vinifera L.	Total polyphenols 12% expressed as gallic acid
Grape Seed P.E	Vitis vinifera L.	Proantocyaninds 95%
Green Coffee Bean P.E	Coffea robusta or Coffea arabica	Chlorogenic acids 50%
Green Tea P.E	Camellia sinensis(L.)O.Kuntze	Polypenols 90%,98%,EGCG 45%,50%
Guarana P.E	Paulinia cupana H.B. et K	Total alkaloids 10% Caffeine 10%,20%
Gymnema P.E	Gymnema affine Decne	Gymnemic Acids 25%
Gynostemma Pentaphyllum P.E	Gynostemma pentaphyllum (Thunb.) Makino	Gypenosides 80%
Hamamelis P.E	Hamamelis mollis Oliver	Tannins 15%
Hawthorn Berry P.E	Crataegus pinnatifida Bge	Flavones 2.0%
Hawthorn Leaves P.E	Crataegus pinnatifida Bge	Vitexin-2.0-Rhamnoside 1.8%
Hedge Mustard P.E	Sisymbrium officinale L.	Myronate Potassium 0,5%
Hibiscus Flower P.E	Hibiscus rosa sinensis	Antocyanins 5%
Hops Flower P.E	Humulus Lupulus L.	Xanthohumol 5%
Horse Chestnut P.E	Aesculus hippocastanum L.	Aescin 20%
Horsetail P.E	Equisetum arvense L.	Organic Silica 7%
Huperzia Serrata P.E	Huperzia serrata (Thunb.) Trev	Huperzine A 1%,5%
Ivy Leaf P.E	Hedera helix L.	Hederacoside 5%
Kava P.E	Piper Methysticum	Kaklactones 30%
Kelp P.E	Laminaria japonica Arsch	Polysaccharides 20%
Kola Nut P.E	Cola nitida (Vent.) Schott et Endi	Caffeine 10%,20%
Konjac P.E	Amorphophalms konjac	Glucomannan 90%
Krameria Triandra P.E.	Krameria lappacea (Dombey) Burdet	Neolignan 15%
Kudzu Root P.E	Pueraria lobata(willd.)Ohwi	Isoflavones 40%,80%
Lemon Balm P.E.	Melissa officinalis L.	Hydroxycinnamic derivates 10%
Lespedeza P.E.	Lespedeza capitata(L)Michx	Flavones 20%
Lycium Fruit P.E	Lycium barbarum L.	Polysaccharides 10%,20%,40%,50%
Lycopersicum P.E	Solanum lycopersicum L.	Lycopene 5%,10%

Product Name	Botanical Source	Main component Content
Maitake Mushroom P.E	Lentinus edodes (Berk.)sing	Polysaccharides 10%,20%
Magnolia Cortex P.E	Magnolia officinalis Rehd. Et Wils	Magnolol Honokiol 2%,5%,10%
Mangosteen P.E	Garcinia mangostana L.	Mangostin 10%,20%
Marigold P.E	Tagetes erecta L.	Lutein 10%,20% Zeaxanthin 5%,50%
Melilotus P.E.	Melilotus officinalis (L.) Pallas	Coumarin 18%
Milk Thistle P.E	Silybum marianum (L.) Gaertn	Silymarin 80%
Millet P.E.	Panicum miliaceum L.	GC 7%,Fatty Acids 10%,HPLC 40%,Methionine 60%
Neettle Leaf/Root P.E	Urtica fissa E.Pritz	Silica 1% - β -Sitosterols 1%
Olive P.E.	Olea europaea L.	Hydroxytyrosol 1,5%, Verbascoside 5%
Olive P.E.	Olea europaea L.	Total polyphenols 10%, Verbascoside 2%
Orthosiphon P.E.	Orthosiphon samineus Benth	Potassium 8%
Passion Flower P.E	Passiflora incarnata L.	Flavones 4%
Pine Bark P.E	Pinus massoniana Lamb	Proanthocyanidins 95%
Pomegranate P.E	Punica granatum L.	Elleagic Acid 20%,40%,70%
Pomegranate P.E	Punica granatum L.	Polyphenols 40%, Punicalagin A&B 40%
Protea Cynaroides P.E.	Tilia cordata Mill/Tilia platyphyllos Scop	Flavone 0,5%
Pygeum Africanum P.E	Prunus Africana L.	Phytosterols 2,5%
Quassia P.E.	Pricrasma excelsa (Sw.) Planch	Sum of quassin+neoquassin 55%
Raspberry P.E	Rubus chingii Hu	Elleagic Acid 40%
Red Clover P.E	Trifolium pratense L.	Isoflavones 8%,20%,40%
Rhodiola Rosea P.E	Rhodiola rosea (Prain ex Hamet)Fu	Rosavin 1%,2%,3% Salidroside 1%,2%,3%
Rhubarb P.E.	Rheum emodi Wall	Total anthraquinones 10% calculated as aloe emodin
Rosemary P.E.	Rosmarinus officinalis L.	Rosmarinic acid 2,5%,25% Carnosic acid 10%,60%
Saw Palmetto Berry P.E	Serenoa repens (bartram) small	Fatty Acids 25%,45%
Schisandra P.E	Schisandra chinensis(Turcz.)Baill	Schisandrins 1%,2%,5%,9%,20% Schisandrol 1%,2%,3% Schisandrin B 1%,2% 3,2%
Sea Buckthorn P.E	Hippophae rhamnoides L.	Flavones 5%
Senna Leaf P.E	Cassia angustifolia Vahl	Sennoside 6%,8% Hydroxyanthracene glycosides 47,5% Sennosides 55%
Siberian Ginseng P.E	Eleutherocus senticosus (Rupr. Et Maxim.)Harms	Eleutheroside B+E0.8%,1,5%

Product Name	Botanical Source	Main component Content
Soybean P.E.	Glycine max (L.) Merr	Isoflavones 40%,80%
St.John's Wort P.E	Hypericum perforatum L.	Total Hypericins 0,3% Hyperforin 3,0%
Tamarind Seed P.E.	Tamarindus indica L.	Polysaccharides 85%
Tolu Balsam P.E.	Myroxylon balsamum (L.) Harms var. balsamum	Sucrose 35%
Tribulus Terrestris P.E	Tribulus Terrestris L.	Total Saponins 45%,60%,80% Prodioscin 20%,40%
Uva Ursi P.E.	Arctostaphylos uvaursi L.	Arbutin 20%
White Kidney Bean P.E.	Phaseolus vulgaris L.	α -amylase inhibitor 6% 100U/mg α -amylase inhibitor activity 3000 HAU/g Hemagglutinating activity
White Willow Bark P.E	Salix alba L.	Salicin 15%,25%,30%,50%
Wild Jujuba P.E	Ziziphus jujubaMill var.spinosa(Bunge)Hu	Jujuboside A+B 2%
Wild Yam P.E	Dioscorea opposita Thunb	Diosgenin 16%,20%
Yohimbine Bark P.E	Rublanceae.Corynant.Yohimbine	Yohimbine HCL 8%

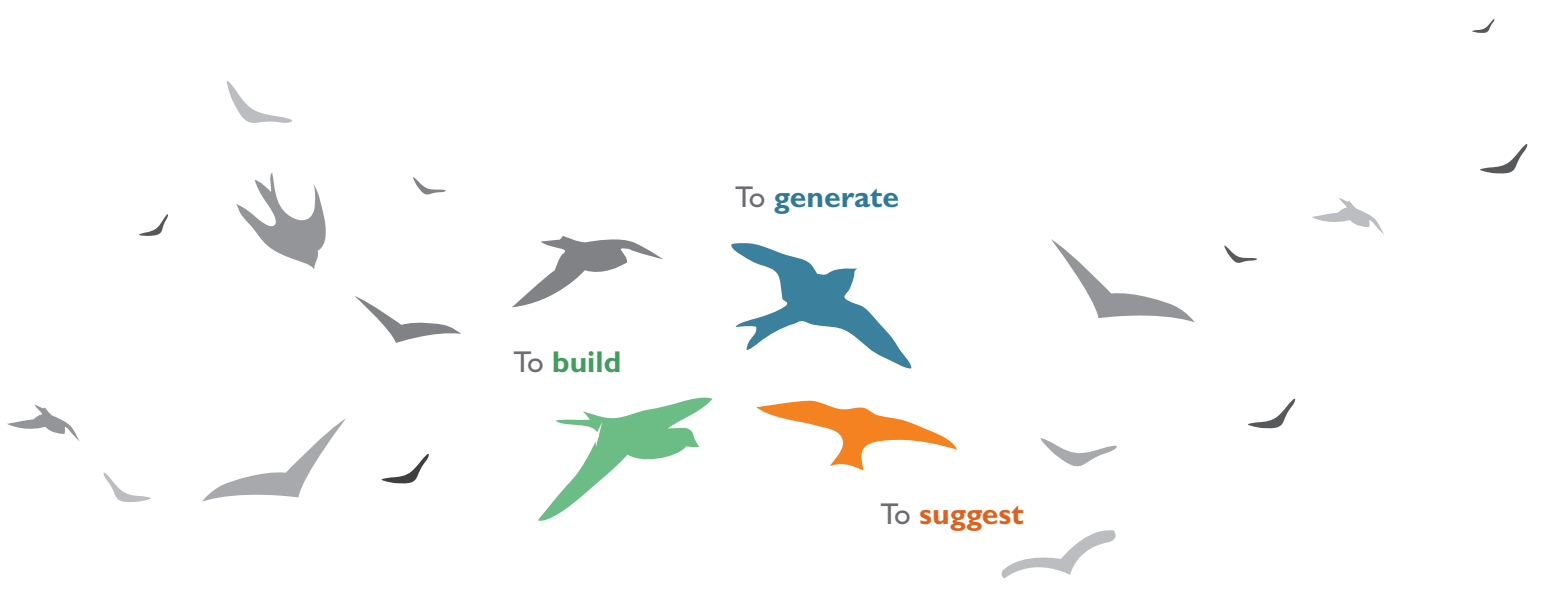
EFFECTIVE COMPONENT MONOMER

Product Name	Botanical Source	Main component Content
10-DAB III	Taxus baccata L.	10-DAB III 99%
18β - Glycyrrhiza glabra L.	Glycyrrhiza glabra L.	18 β- Glycyrrrethnicacid 98% by potentiometry
5-HTP	Griffonia Simplicifolia(Vahl ex DC)Bail	5-HTP 99%
9-DHB	Taxus baccata L.	9-DHB 99%
α- Mangostin	Garcinia mangostana L.	α-Mangostin 98%
Aloe Emodin	Aloe Vera L.	Aloe Emodin 98%
Apigenin	Citrus paradisi Macfadyen	Apigenin 99%
Ajmaline	Rauwolfia vomitoria Afz	Ajmaline 98%
Amygdalin	Prunus armeniaca L.	Amygdalin 98%
Artemisinine	Artemisia annua L.	Artemisinine 98%
Berberine Hydrochloride	Phellodendron amurense Rup	Berberine Hydrochloride 98%
Boldine	Peumus boldus Molina	Boldine 98,5%
Camptothecine	Camptotheca acuminata Decne. Var. Acuminata	Camptothecine 98%
Colchicine USP	Gloriosa Superba L.	Colchicine 94%
Colchicoside	Gloriosa Superba L.	Colchicoside 85%
Chrysin	Oroxylum indicum(L.)Vent	Chrysin 98%
Cytizine	Sophora alopecuroides L.	Cytizine 98%
Diosgenin	Dioscorea zingiberensis C.H. Wright	Diosgenin 98%
Diacerein	Aloe Vera L.	Diacerein 98%
Daidzein	Glycine max (L.)Merr	Daidzein 98%
Diosmin	Citrus aurantium L.	Diosmin 95%
Diosmetin	Citrus aurantium L.	Diosmetin 99%
Eriodictyol	Citrus aurantium L.	Eriodictyol 99%
Ellagic Acid	Punica granatum L.	Ellagic Acid 90%
Emodin	Polygonum cuspidatum Sieb. Et Zucc	Emodin 98%
Escin	Aesculus hippocastanum L.	Escin 95%
Esculin	Fraxinus chinensis Roxb	Esculin 98%
Esculetin	Fraxinus chinensis Roxb	Esculetin 98%
Euphobiasteroid	Euphorbia lathyris L.	Euphobiasteroid 99%
Ethylximenynate	Santalum album L.	Ethylximenynate 70%
Evodiamine	Evodia rutaecarpa (Juss.)Benth	Evodiamine
Fisetin	Buxus sinica (Rehd. Et Wils) Cheng	Fisetin 98%
Formononetin	Trifolium pratense L.	Formononetinl 98%
Galanthamine	Narcissus pseudonarcissus L.	Galanthamine 98%
Genipin	Gardenia jasminoides Ellis	Genipin 90%
Genistein	Sophora subprostata Chun et T.Chen	Genisten 98%
Hesperidin	Citrus aurantium L.	Hesperidin 90%,95%,98%
Hesperitin	Citrus aurantium L.	Hesperitin 98%
Honokiol	Magnolia officinalis Rehd. Et Wils	Honokiol 98%
Huperzine A	Huperzia serrata (Thunb.) Trev	Huperzine A 99%
Icariin	Epimedium brevicornu Maxim	Icariin 98%

Product Name	Botanical Source	Main component Content
L-Dopa	Mucuna pruriens (Linn.) DC	L-Dopa 98%
Luteolin	Sophora japonica L.	Luteolin 98%
Kaempferol	Sophora japonica L.	Kaempferol 98%
Khellin	Ammi visnaga (L.) Lam	Khellin 98%
Magnolol	Magnolia officinalis Rehd. Et Wils	Magnolol 98%
Monoammonium Glycyrrhizinate	Glycyrrhiza glabra L.	Monoammonium Glycyrrhizinate 98%
Naringin	Citrus paradisi Macfadyen	Naringin 98%
Neohesperidin	Citrus aurantium L.	Neohesperidin 98%
Nicergoline	Ipomoea hederacea - Jacq	Nicergoline 98%
Nobiletin	Citrus aurantium L.	Nobiletin 98%
Naringenin	Citrus paradisi Macfadyen	Naringenin 98%
Naringin Dihydrochalcone	Citrus paradisi Macfadyen	Naringin Dihydrochalcone 98%
Neohesperidin Dihydrochalcone	Citrus paradisi Macfadyen	Neohesperidin Dihydrochalcone 98%
Oleanolic Acid	Hemsleya amabilis Diels	Oleanolic Acid
Oleuropein	Olea europaea L.	Oleuropein 98%
Osthole	Cnidium monnieri (L.)Cuss	Osthole 98%
Paclitaxel	Taxus baccata L.	Paclitaxel 99%
Piperine	Piper nigrum L.	Piperine 98%
Protodioscin	Tribulus Terrestris L.	Protodioscin 90%
Puerarin	Pueraria lobata(willd.)Ohwi	Puerarin 98%
Quercetin	Sophora japonica L.	Quercetin 95%
Reserpine	Rauwolfia vomitoria Afz	Reserpine 99%
Resveratrol	Polygonum cuspidatum Sieb. Et Zucc	Resveratrol 98%
Ruscogenin	Ruscus aculeatus L.	Ruscogenin 95%
Ruscogenins	Ruscus aculeatus L.	Ruscogenin+Neoruscogenin 92%
Rutin	Sophora japonica L.	DAB9,DAB10,EP5,5
Rhein	Aloe Vera L.	Rhein 98%
Sclareolide	Salvia Sclarea L.	Sclareolide 98%
Salicin	Salix alba L.	Salicin 98%
Sclareol	Salvia Sclarea L.	Sclareol 98%
Sericoside	Terminalia sericea Burch. Ex DC	Sericoside 76%
Sesamin	Sesamum indicum L.	Sesamin 98%
Shikimic Acid	Illicium verum Hook.f	Shikimic Acid 99%
Synephrine	Citrus aurantium L.	Synephrine 99%
Tabersonine	Voacango africana Stapf	Tabersonine 98%
Tangeretin	Citrus aurantium L.	Tangeretin 98%
Thiocolchicoside	Gloriosa Superba L.	Thiocolchicoside 98%
Troxerutin	Sophora japonica L.	Troxerutin
Tetrahydrocurcumin	Curcuma Longa L.	Tetrahydrocurcumin 95%
Vincamine	Voacango africana Stapf	Vincamine 98%
Vinpocetine	Voacango africana Stapf	Vinpocetine 98%
Visnadine	Ammi visnaga (L.) Lam	Visnadine 90%
Yohimbine HCL	Rublanceae.Corynant.Yohimbine	Yohimbine HCL 98%

NOTE:

A series of horizontal dotted lines for writing notes.



lcm-group.it

- LCM spa -

Via Mazzini, 33 - 20099 Sesto San Giovanni (MI) - ITALY

Tel.: +39.02.2627031 - Fax. +39.02.26261008